

405 | COLORADO



A development of

brandywine
REALTY TRUST



405 | COLORADO

Austin's Smart, New Address.

405 Colorado provides a seamless transition from Austin's vibrant downtown street life, outside, to an inspiring and creative work environment, inside.



A development of

brandywine
REALTY TRUST



DOWNTOWN'S SMART, NEW ADDRESS

As one of the leading owners of Class-A office properties, Brandywine Realty Trust continues to expand its footprint in Austin—arriving downtown with a striking addition to the City's skyline, known currently as 405 Colorado.

Spanning two decades of smart, sustained growth, Brandywine has set precedents for creativity in real estate—anticipating the future and delivering first-class solutions. We've evolved from a start-up office landlord to one of America's most prolific multi-market property owners, inclusive of over \$2 billion in successful development. This new landmark project at 405 Colorado in the Texas state capital is designed to surpass standards for innovative workplaces and exceed expectations for the modern, urban, lifestyle experience, 405 Colorado embodies the spirit of Austin's dynamic culture and vibrant citizenry.

A NEW AUSTIN ICON

405 Colorado presents a dynamic image from every direction, yet its soul is in the two levels of outdoor space—the street level entry and the open Sky Lounge of the office tower where the design opens itself to Austin's new, exciting and active urban lifestyle.

405 Colorado brings a high level of architectural and urban design to meet the City of Austin Great Streets Development Program. 405 Colorado is the first project under the Great Streets Program to be developed along Fourth Street, setting the precedent for the street's future development.



BUILDING SPECIFICATIONS

| | |
|----------------------|--------------|
| EST. OPEX | \$18.50/SF |
| OFFICE BUILDING SIZE | 202,138 SF |
| SKY LOUNGE | 14TH FLOOR |
| GROUND FLOOR RETAIL | 3,665 SF |
| PARKING | 2.6/1,000 SF |

405 COLORADO DEVELOPMENT TEAM

Composed of some the experts in building the best and most innovative buildings in the country, our team was hand-picked for their ingenuity and comprehensive capabilities.

| | |
|-------------------|-------------------------|
| OWNER & DEVELOPER | Brandywine Realty Trust |
| ARCHITECT | Duda Paine |
| CIVIL ENGINEER | Stantec |

TEST FITS FOR ALL

Open offices accommodate flexible configurations, allowing tenants the opportunity to create unique, custom spaces. With core service and meeting spaces offset to the north, office space on the remainder of the floor opens up for panoramic views.

OPEN FLOORPLAN

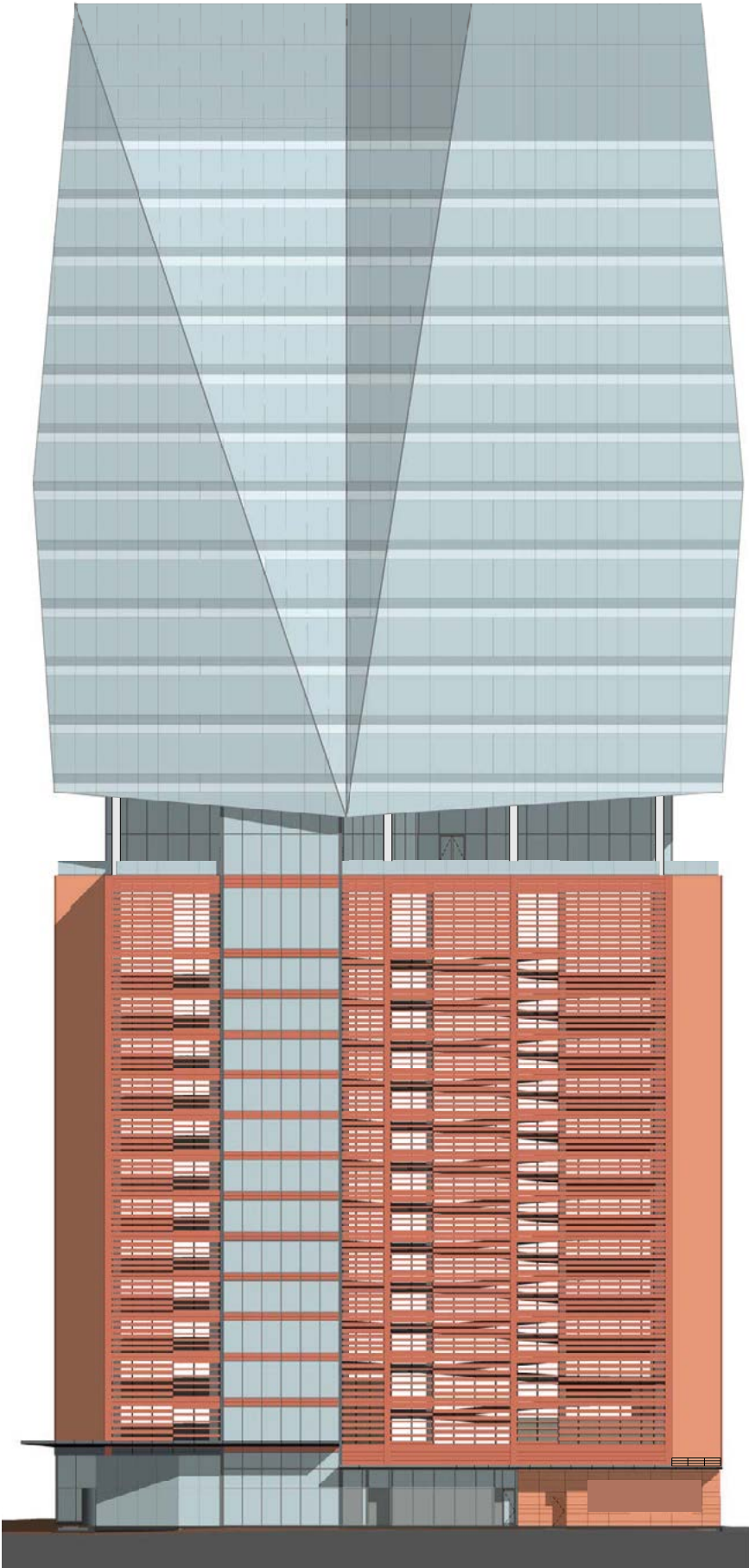


HARDWALL + OPEN FLOORPLAN



AVAILABILITY

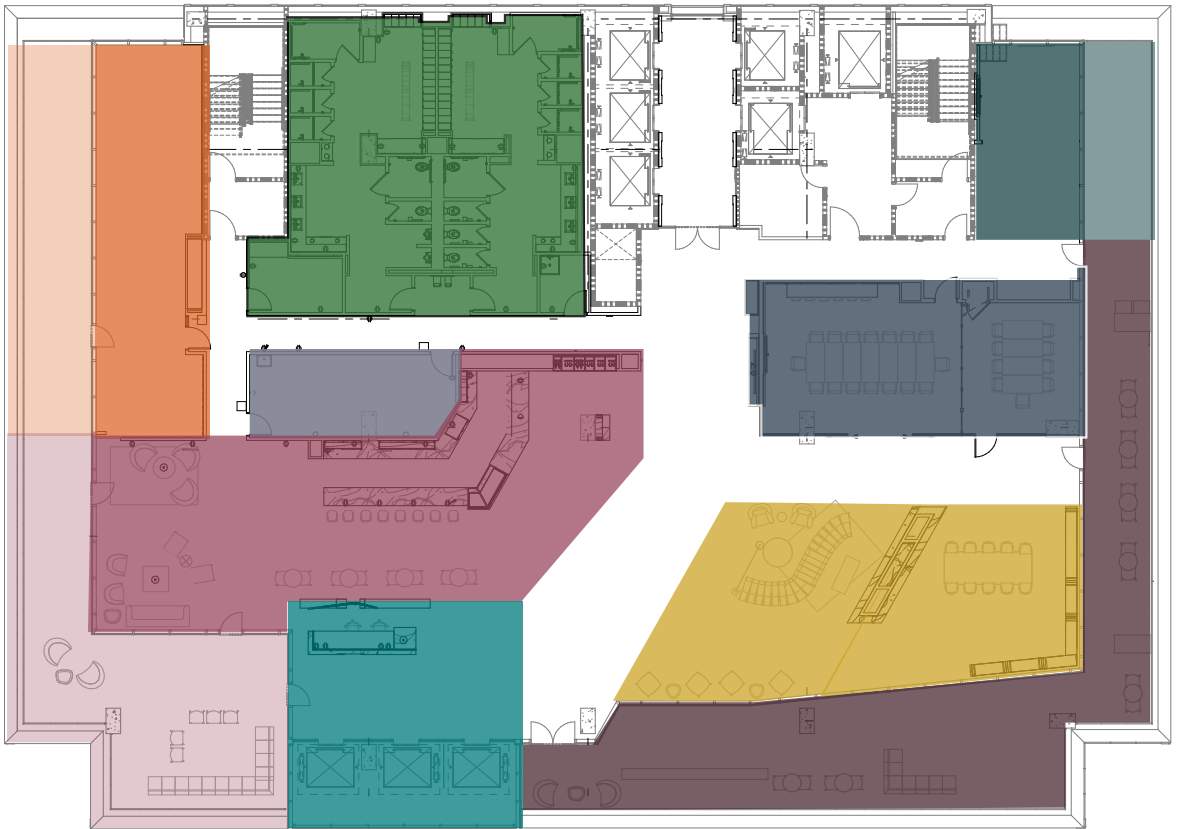
405 Colorado's sculptural design features glass enclosed office levels atop a strong masonry base of parking. Open entry and upper plaza levels punctuate the form. Multifaceted glass facades fold vertically and horizontally to shape and taper the building's office levels.



- **25** Office 17,238 SF
- **24** Office 17,627 SF
- **23** Office 18,005 SF
- **22** Office 18,375 SF
- **21** Office 18,739 SF
- **20** Office 19,087 SF
- **19** Office 19,051 SF
- **18** Office 18,837 SF
- **17** LEASED
- **16** LEASED
- **15** Office 5,541 SF
- **14** Sky Lounge
Lobby Elevators
-

2-13 Parking
Bike Storage

1 Ground Floor Lobby
Retail 3,665 SF





Sky Lounge Entrance



Cafe/ Bar Area



Fitness Studio + Outdoor Deck



Catering Kitchen



Luxury Locker Rooms



Tenant Convenience



Conference Center



The Living Room



Southeast Terrace

THE SKY LOUNGE

Standing tall at 140 feet above ground, 405 Colorado's 14th floor Sky Lounge boasts ultra-rich amenities. The Sky Lounge seamlessly unfolds inviting living room environments mixed with functional workspace with a thoughtful modern design.

Conference in Style

Try out one of the unique conference rooms, each varying in size and use. High-end finish-outs combined with cutting edge technology hook-ups make this the optimal place to host any type of meeting.

The Café

The Sky Café is an idyllic, transitional space, where it is convenient to grab your morning coffee and/or an afternoon cocktail.

The Terrace

Austin lives outside; queue the expansive Sky Terrace - a rare amenity in Downtown Austin. Picture late afternoon meetings outside with a Topo Chico and lime. Take in the views from tucked-in spaces with office floors overhanging above.



Ground Floor Street View



Ground Floor Lobby Interior



Luxury Locker Rooms

MEET THE AMENITIES

405 Colorado's glass elevators offer panoramic views toward the south and arrive atop the structured parking at the Sky Lounge one level below the office tower. Outdoor terraces, semi-permeable lounge spaces, and a fitness and conference center greet those working in or visiting the office tower.

Conference Room Facilities

Multi-functional rooms designed for customizable tenant needs and equipped with modern technology.

Event Space

Host your corporate function in the high-design, living room style Sky Lounge.

Security

Card key access and security on-site 24 hours a day, 7 days a week.

Bike Storage

Located four blocks from the Lady Bird Lake hike & bike trail, spacious room for bike storage onsite.

Concierge Services

Offering an array of services from car washes to dry cleaning pick-up and delivery.

Locker Rooms

After a jog or paddle on Lady Bird Lake, tenants can unwind in the expansive, spa-like dressing rooms complete with showers, oversized vanity stations and lockers.

Sky Café

The Sky Café is an idyllic, transitional space, catering to the breakfast, lunch and afternoon crowds, making it convenient to grab your morning coffee and/or an afternoon cocktail.

Sky Terrace

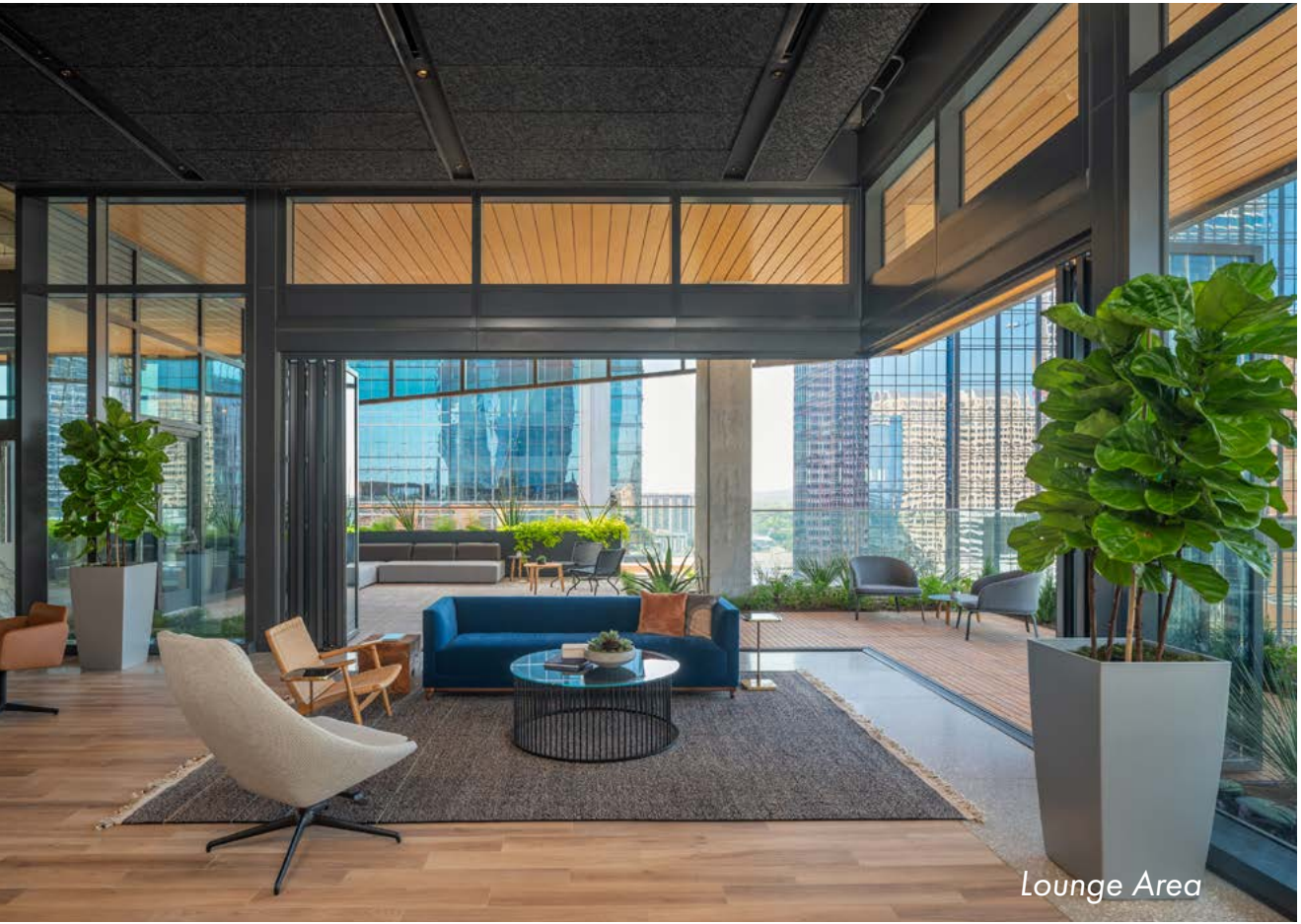
Austin lives outside; queue the expansive Sky Terrace - a rare amenity in Downtown Austin. Picture late afternoon meetings outside with a Topo Chico and lime. Enjoy the refreshing Austin skyline outdoors on 405 Colorado's signature 14th floor terrace.

Parking

Above market parking with lighted parking space counter and direct elevator access to the Sky Lounge. The 13-level garage acts as a podium for the office tower, creating a sense of solidity at the tower's base. Alternate arrangements of solid and screening elements minimize the visibility of cars, enclosing an open-air garage configuration that eliminates mechanical ventilation.

Downtown Vibe

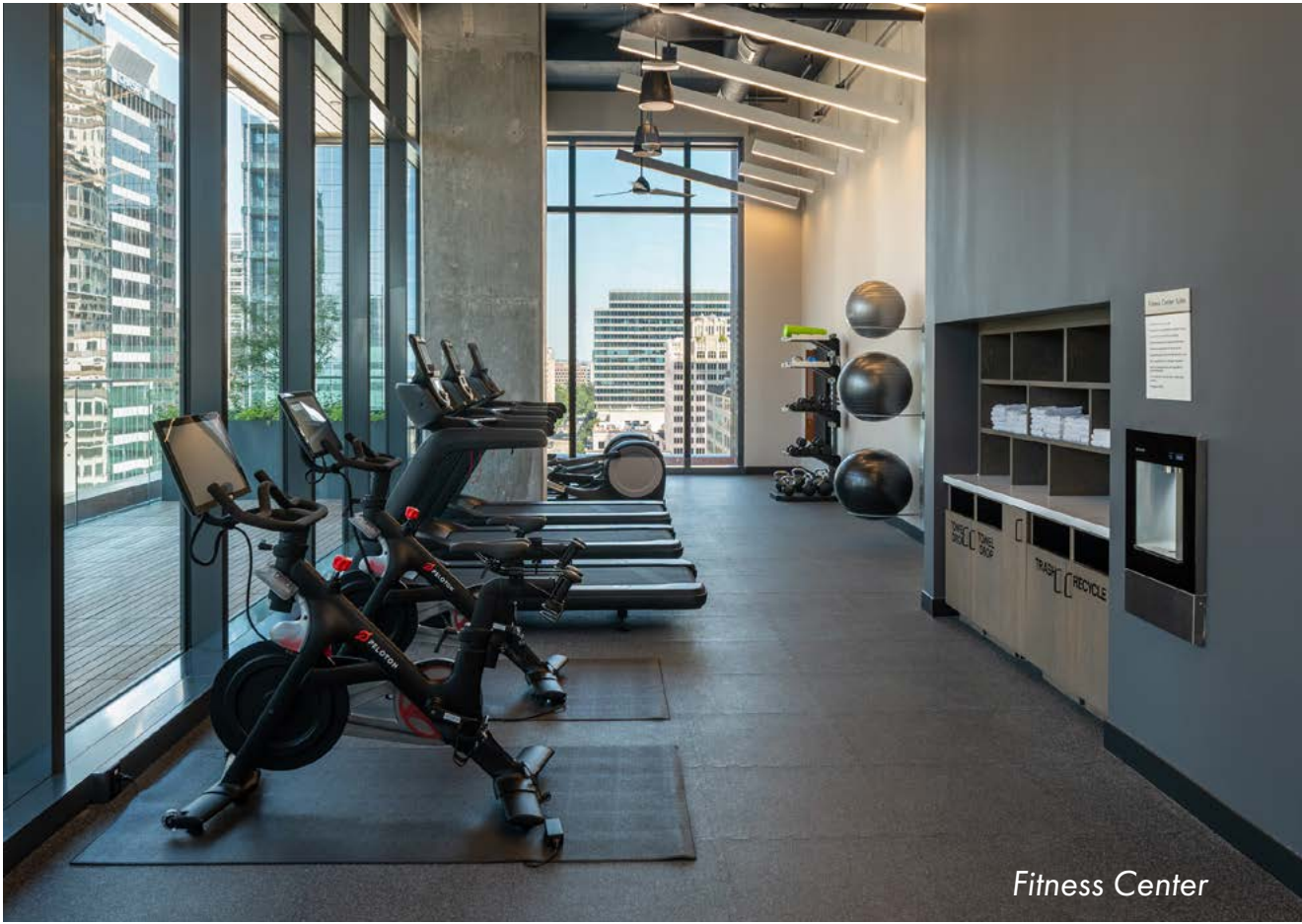
Beneath 405 Colorado's signature profile, generous sidewalks shape an inviting and active pedestrian zone - where natural elements, including wood and masonry, and features such as public art, ample seating areas and shade trees welcome street life into the building. The character of the neighboring warehouse district inspired a more modern approach to materiality, which reflects the new urban purposes of commercial, residential and retail.



Lounge Area



Reception Area



Fitness Center

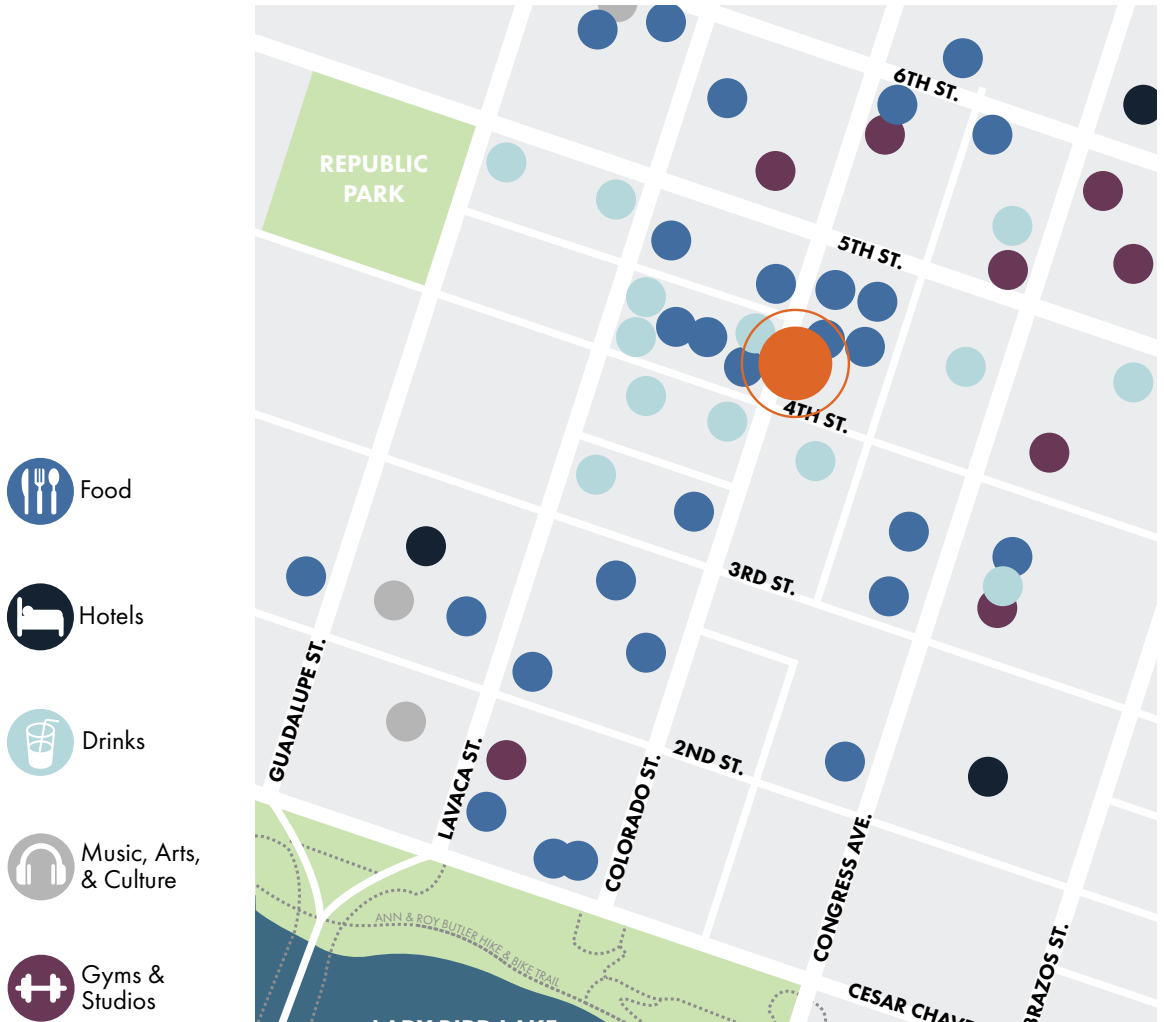


Conference Room

405 | COLORADO

AS CENTRAL AS IT GETS

Accessibility and parking are uncommon features for downtown buildings in Austin. 405 Colorado boasts an above market parking ratio of 2.6/1,000, making it one of the easiest places to park in Austin's thriving entertainment and work districts. Located at 4th and Colorado, 405 Colorado is four blocks from Lake Bird Lake and less than a block from Austin's own main street, Congress Avenue.



ABOUT BRANDYWINE

Brandywine Realty Trust (NYSE: BDN) is one of the largest, publicly traded, full-service, integrated real estate companies in the United States, with a core focus in the Philadelphia, PA, Washington, D.C., and Austin, TX markets. Organized as a real estate investment trust (REIT), we own, develop, lease and manage an urban, town center and transit-oriented portfolio. Our purpose is to shape, connect and inspire the world around us through our expertise, the relationships we foster, the communities in which we live and work, and the history we build together. Our deep commitment to our communities was recognized by NAIOP when we were presented with the Developer of the Year Award—the highest honor in the commercial real estate industry.

www.405Colorado.com

For leasing information, please contact:

Ralph Bistline

512.306.1283

Ralph.Bistline@bdnreit.com

Blair Nelson

512.872.7193

Blair.Nelson@bdnreit.com

Don Weekley

512.306.1994

Don.Weekley@bdnreit.com

Troy Holme

512.482.5509

Troy.Holme@cbre.com

Katie Ekstrom

512.499.4901

Katie.Ekstrom@cbre.com

Casey Ford

512.499.4960

Casey.Ford@cbre.com